

## 2B Landscape Consultancy Ltd

assessment - design - visualisation - realisation

12 Everthorpe Lane, North Cave, East Yorkshire, HU15 2LF  
Tel: 01430 432004 <http://www.2bconsultancy.co.uk>

### Key:

- Proposed turbine location (496099, 469363)
- Nearby proposed turbine (497810, 471343)
- 5km Range Rings at 5km Intervals
- Elevation
- Other Turbines
- built
- approved
- application
- scoping
- refused
- withdrawn



Revision: -

Scale @ A3L:  
1:100,000, see also barscale and 1km grid

Drawn: ACM Checked: EAB

Date:  
July 2013

Filename:  
2012-2013-Weaverthorpe-WW-Fig01-Topo.pdf

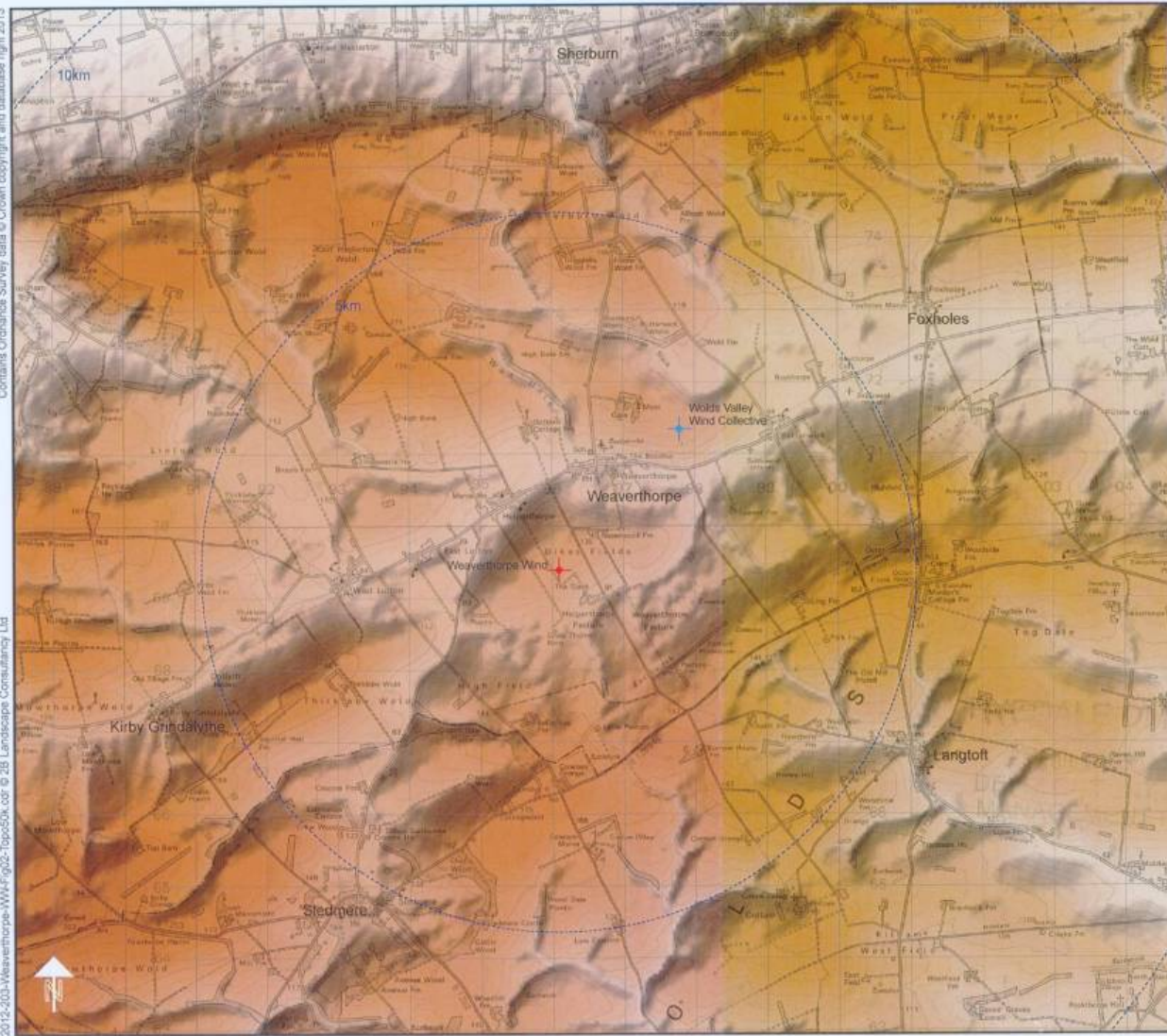
Project:  
Proposed turbine, Weaverthorpe

Client:  
Weaverthorpe Wind

Drawing title:  
Topography and other turbines

Figure:  
01



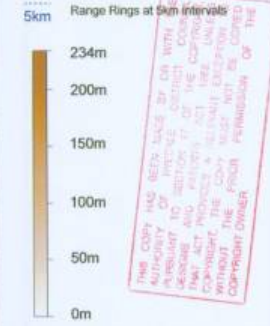


**2B Landscape Consultancy Ltd**

assessment - design - visualisation - realisation

12 Ewerthorpe Lane, North Cave, East Yorkshire, HU15 2LF  
Tel: 01430 423204 http://www.2bconsultancy.co.uk

- Key:**
- Proposed turbine location (496099, 469263)
  - Nearby proposed turbine (497810, 471343)



THIS COPY HAS BEEN MADE BY OR WITH THE AUTHORITY OF THE COPYRIGHT OWNER AND SHOULD NOT BE REPRODUCED OR TRANSMITTED IN ANY FORM OR BY ANY MEANS, ELECTRONIC OR MECHANICAL, INCLUDING PHOTOCOPYING, RECORDING, OR BY ANY INFORMATION STORAGE AND RETRIEVAL SYSTEM, WITHOUT THE PRIOR PERMISSION OF THE COPYRIGHT OWNER.



Revision: -

Scale @ A3L:  
1:50,000, see also barscale and 1km grid

Drawn: ACM Checked: EAB

Date:  
July 2013

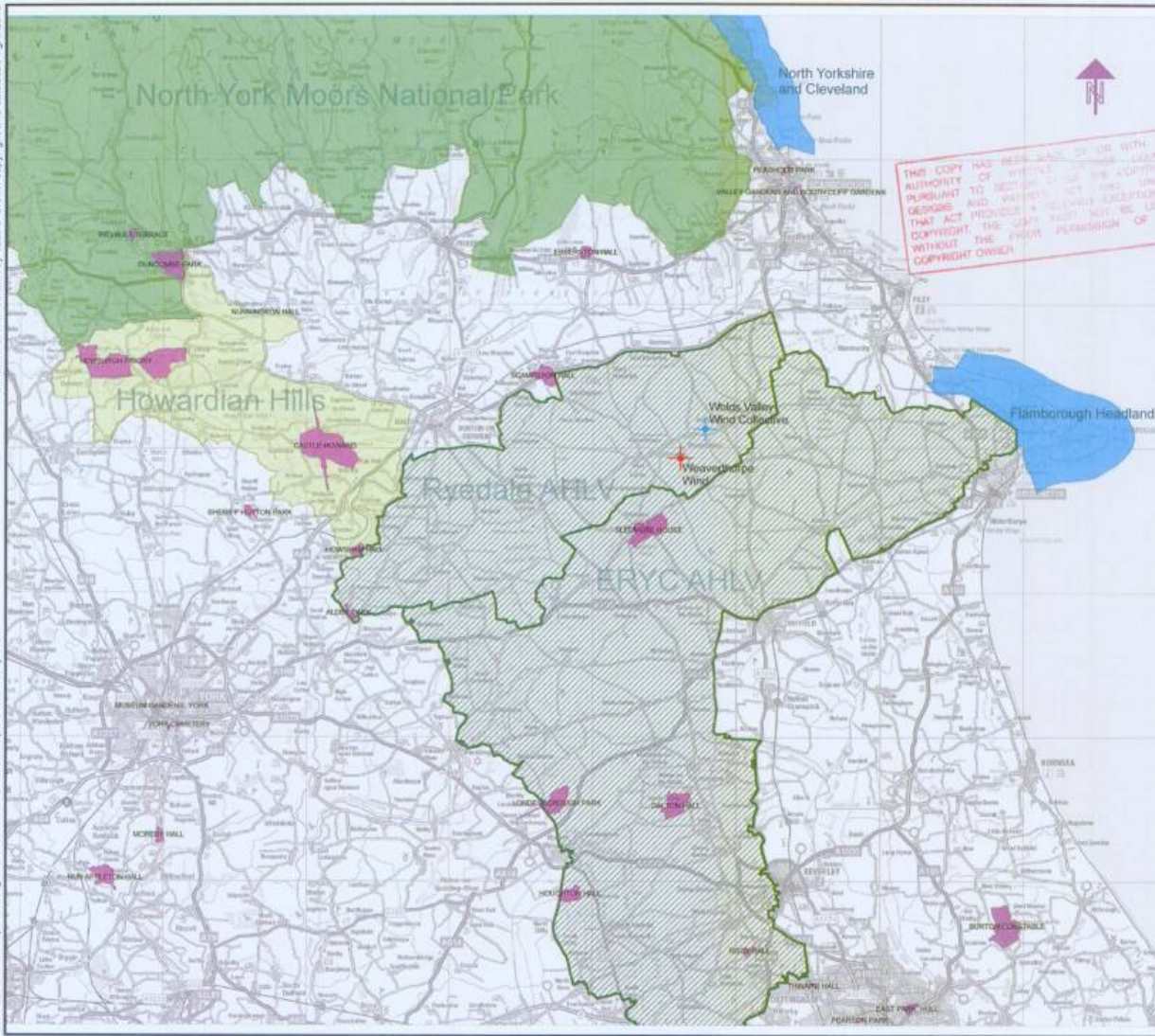
Filename:  
2012-203-Weaverthorpe-WW-Fig02-Topo50k.pdf

Project:  
Proposed turbine, Weaverthorpe

Client:  
Weaverthorpe Wind

Drawing title:  
Topography

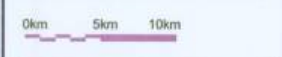
Figure:  
02



**2B Landscape Consultancy Ltd**  
 assessment - design - visualisation - realisation  
 12 Everthorpe Lane, North Cave, East Yorkshire, HU15 2LF  
 Tel: 01430 423294 http://www.2bconsultancy.co.uk

- Key:**
- Proposed turbine location (496099, 469363)
  - Nearby proposed turbine (497810, 471343)
  - Area of High Landscape Value
  - Register of Parks and Gardens
  - Area of Outstanding National Beauty
  - Heritage Coast
  - North York Moors National Park

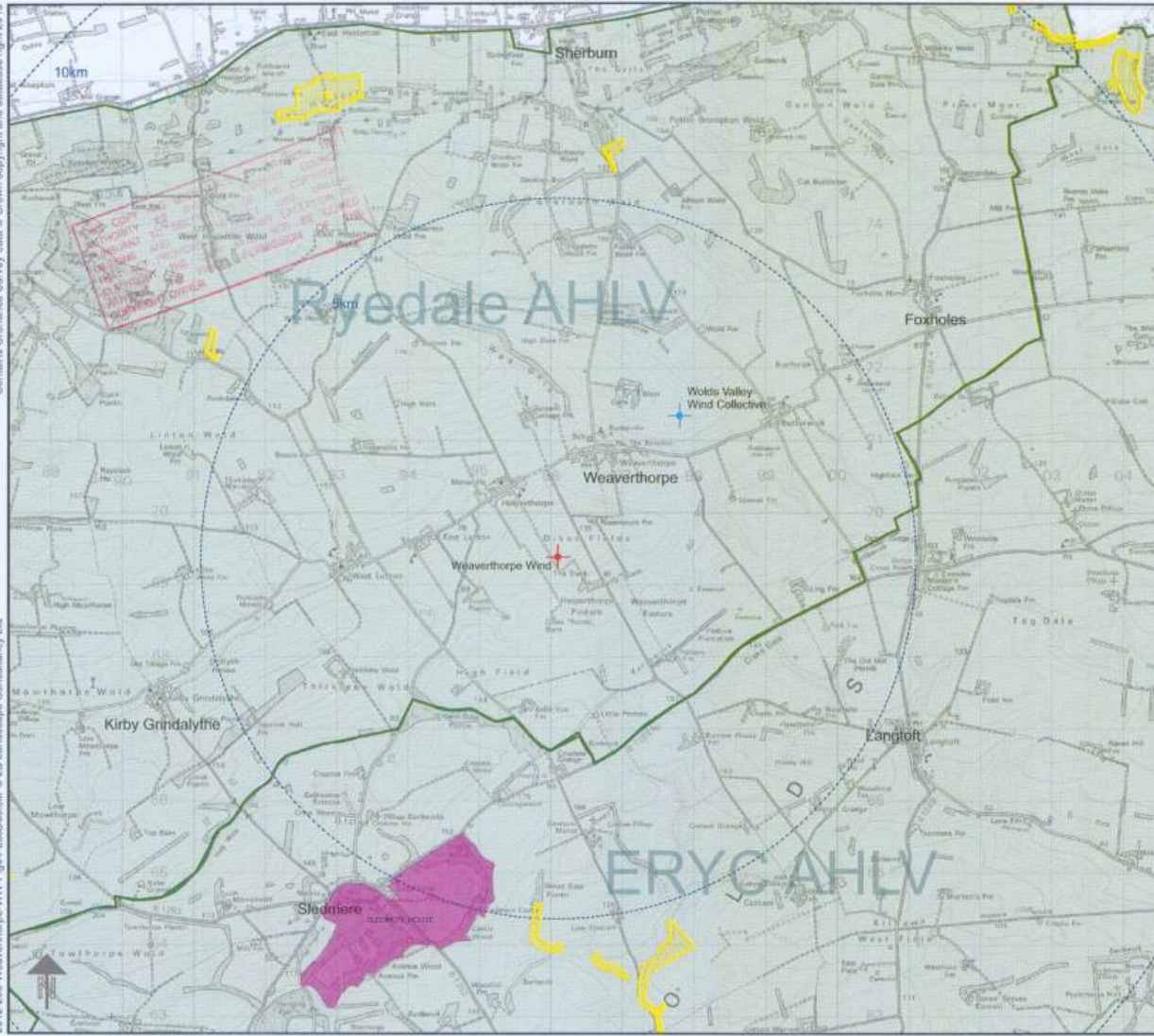
RYEDALE DM  
 30 JUL 2013  
 DISTRICT COUNCIL  
 MANAGEMENT



Revision: -  
 Scale @ A3L:  
 1:250,000, see also barscale and 1km grid  
 Drawn: ACM Checked: EAB  
 Date:  
 July 2013  
 Filename:  
 2012-203-Weaverthorpe-WW-Fig03-LD250k.pdf

Project:  
 Proposed turbine, Weaverthorpe  
 Client:  
 Weaverthorpe Wind  
 Drawing title:  
 Landscape Designations  
 Figure:  
 03





**Key:**

- Proposed turbine location (496099, 469363)
- Nearby proposed turbine (497810, 471343)
- Area of High Landscape Value
- Register of Parks and Gardens
- Site of Special Scientific Interest
- 5km Range Rings at 5km intervals

RYEDALE DM  
30 JUL 2013  
DEVELOPMENT  
MANAGEMENT



Revision: -

Scale @ A3L:  
1:50,000, see also barscale and 1km grid

Drawn: ACM Checked: EAB

Date:  
July 2013

Filename:  
2012-203-Weaverthorpe-WW-Fig04-LscDes.pdf

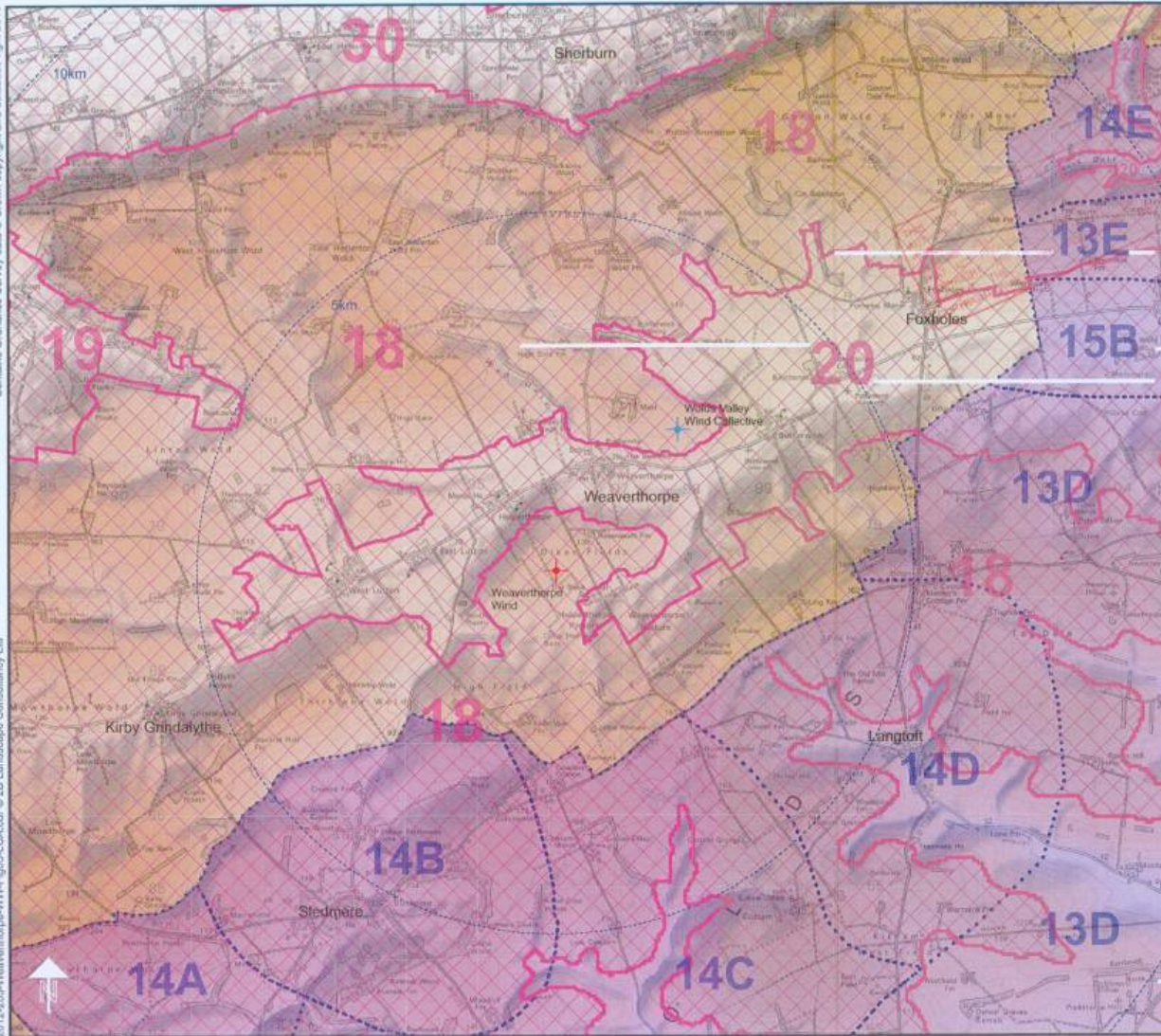
Project:  
Proposed turbine, Weaverthorpe

Client:  
Weaverthorpe Wind

Drawing title:  
Landscape Designations

Figure:  
04





**2B Landscape Consultancy Ltd**

assessment - design - visualisation - realisation  
 12 Everthorpe Lane, North Cave, East Yorkshire, HU13 2LF  
 Tel: 01430 423204 http://www.2bconsultancy.co.uk

- Key:**
- Proposed turbine location (496099, 469363)
  - Nearby proposed turbine (497810, 471343)
  - LCA** East Riding Landscape Character Areas
    - 13D North Wolds Plateau Farmland
    - 14A Fitzwilliam and Humber Valley Farmland
    - 14B Skarborough Estuary Farmland and Pasture
    - 14C Colton Dale and Wold Farmland
    - 14D Langthorpe Dale and Wold Farmland
    - 14E Wold Nook Farmland
    - 15B Copey Stone Corridor Wold Nook to Rudston
  - LCT** North Yorkshire Landscape Character Types
    - 18 Chalk Wolds
    - 19 Chalk Foothills
    - 20 Broad Chalk Valley
    - 20a Sand and Gravel Vale Fringe
  - 5km** Range Rings at 5km intervals

RYEDAILE DM  
 30 JUN 2013  
 DEPARTMENT  
 0km 2km

Revision: -

Scale @ A3L:  
 1:50,000, see also barscale and 1km grid

Drawn: ACM Checked: EAB

Date:  
 July 2013

Filename:  
 2012-203-Weaverthorpe-WW-Fig05-LCA.pdf

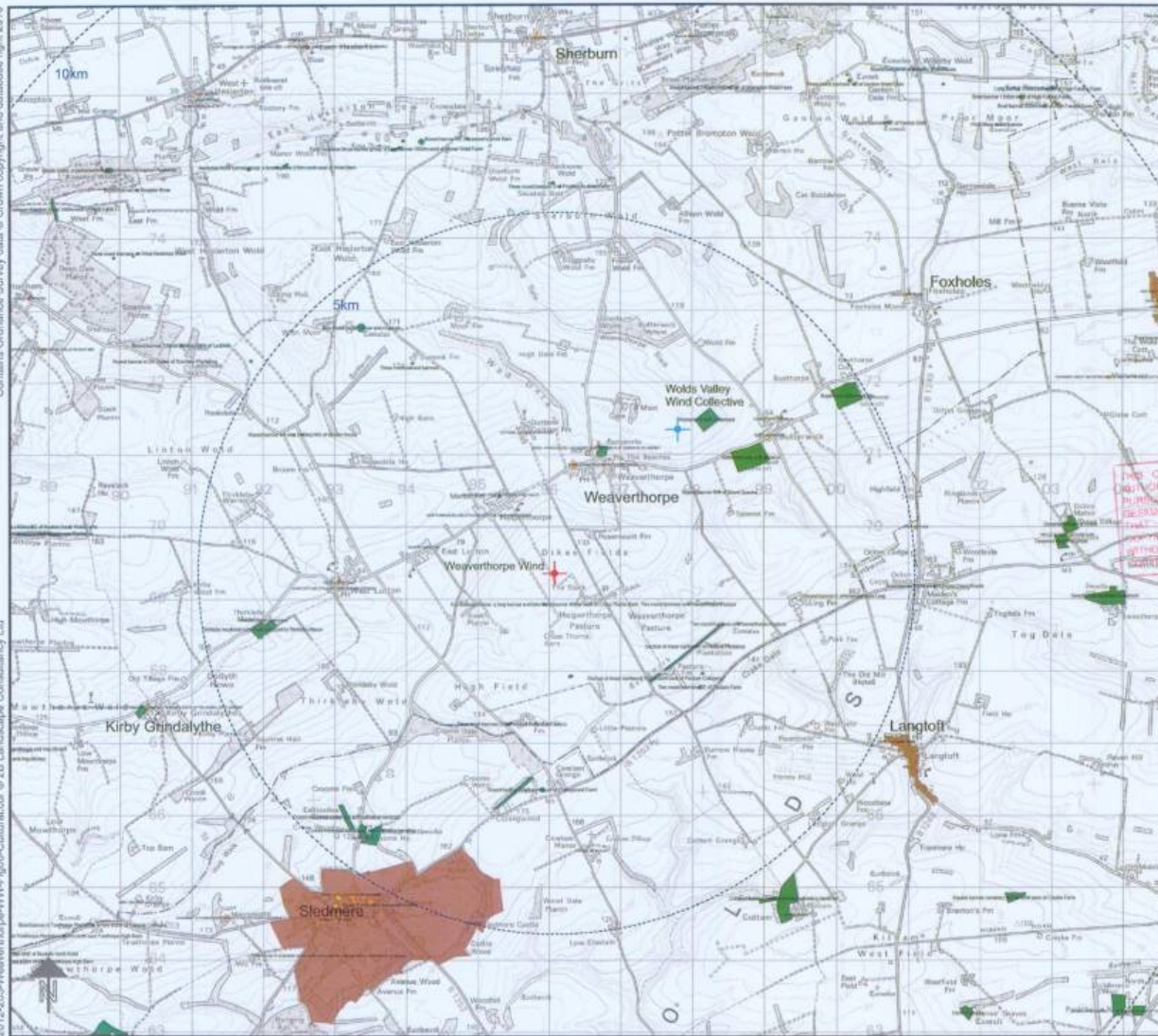
Project:  
 Proposed turbine, Weaverthorpe

Client:  
 Weaverthorpe Wind

Drawing title:  
 Landscape Designations

Figure:  
 05





**2B Landscape Consultancy Ltd**

assessment - design - visualisation - realisation

12 Everthorpe Lane, North Cave, East Yorkshire, HU15 2LF  
Tel: 01430 423294 <http://www.2bconsultancy.co.uk>

**Key:**

-  Proposed turbine location (496099, 469363)
-  Nearby proposed turbine (497810, 471343)
-  Conservation Areas
-  Scheduled Ancient Monuments
-  Listed Buildings Grade 1 / 2 / 2\*
-  Range Rings at 5km intervals

THIS COPY HAS BEEN MADE BY US WITH THE PERMISSION OF HYNDLEY DISTRICT COUNCIL. ANY REPRODUCTION OR DISTRIBUTION OF THIS COPY WITHOUT THE WRITTEN PERMISSION OF HYNDLEY DISTRICT COUNCIL IS STRICTLY PROHIBITED AND SUBJECT TO A PENALTY UNDER SECTION 17(2) OF THE COPYRIGHT, DESIGN AND PATENTS ACT 1988. UNLESS OTHERWISE STATED, THIS COPY MUST NOT BE COPIED, REPRODUCED OR TRANSMITTED IN ANY FORM OR BY ANY MEANS, ELECTRONIC OR MECHANICAL, INCLUDING PHOTOCOPYING, RECORDING, OR BY ANY INFORMATION STORAGE AND RETRIEVAL SYSTEM.



Revision: -

Scale @ A3L:  
1:50,000, see also barscale and 1km grid

Drawn: ACM Checked: EAB

Date:  
July 2013

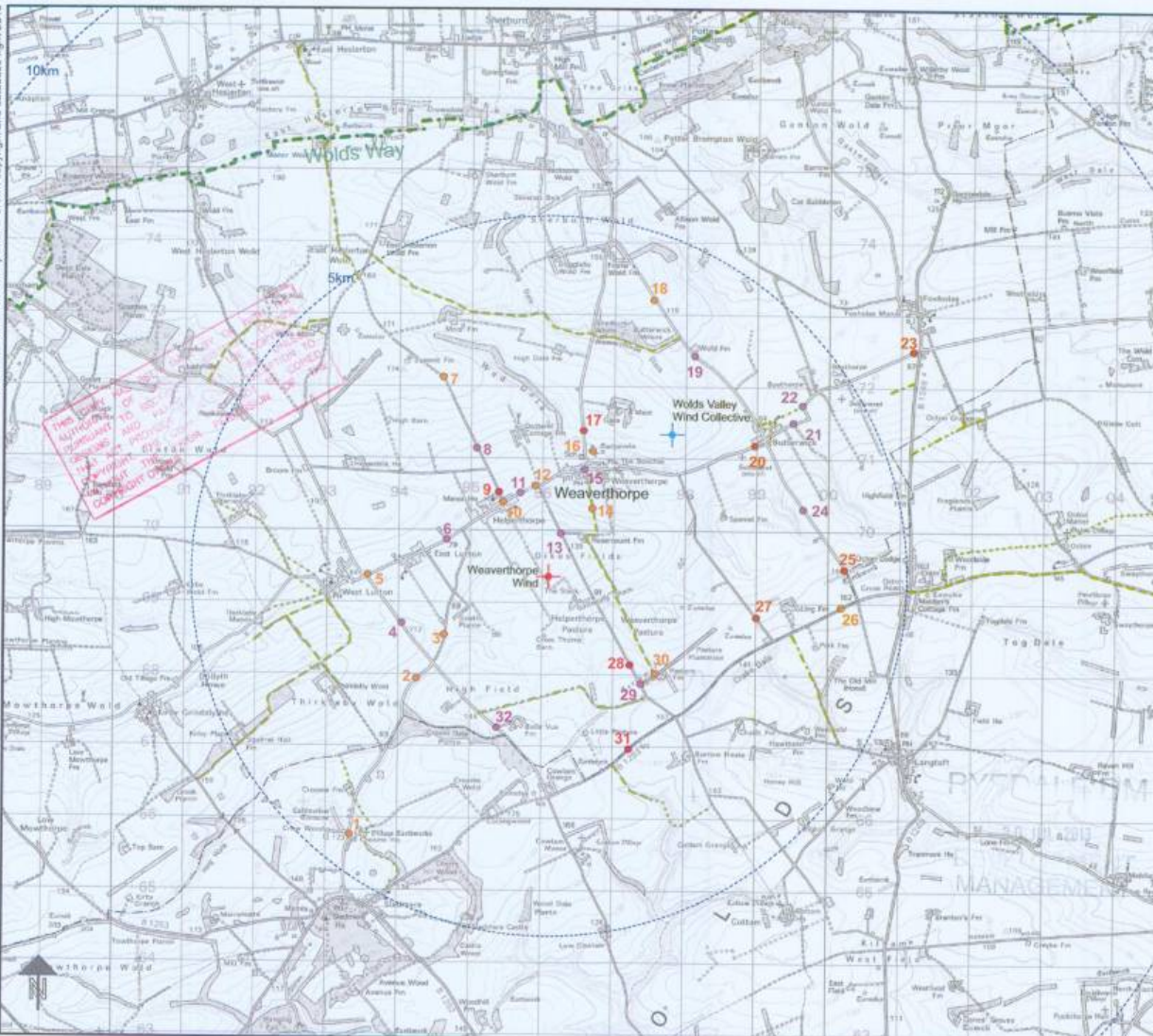
Filename:  
2012-2013-Weaverthorpe-WW-Fig06-Cultural.pdf

Project:  
Proposed turbine, Weaverthorpe

Client:  
Weaverthorpe Wind

Drawing title:  
Cultural Heritage

Figure:  
06



**2B Landscape Consultancy Ltd**  
assessment - design - visualisation - realisation

12 Everhope Lane, North Cave, East Yorkshire, HU15 2LF  
Tel: 01430 42304 <http://www.2blandscape.co.uk>

- Key:**
- Proposed turbine location (496099, 469363)
  - WWC proposed turbine (497810, 471343)
  - Assessed Viewpoint with Photomontage location and approximate view angle
  - Assessed Viewpoint location
  - Visited Viewpoint location

- Public rights of way**
- national trail
  - footpath
  - restricted byway
  - bridleway
  - other public access



Revision: -  
Scale @ A3L:  
1:50,000, see also barscale and 1km grid  
Drawn: ACM Checked: EAB  
Date:  
July 2013  
Filename:  
2012-2013-Weaverthorpe-WW-Fig07-VPs.pdf

Project:  
Proposed turbine, Weaverthorpe  
Client:  
Weaverthorpe Wind  
Drawing title:  
Viewpoint and Public Right of Way locations

Figure:  
07



2012-203-Weaverthorpe-WW-Fig08-Context.cdr © 2B Landscape Consultancy Ltd



**2B Landscape Consultancy Ltd**

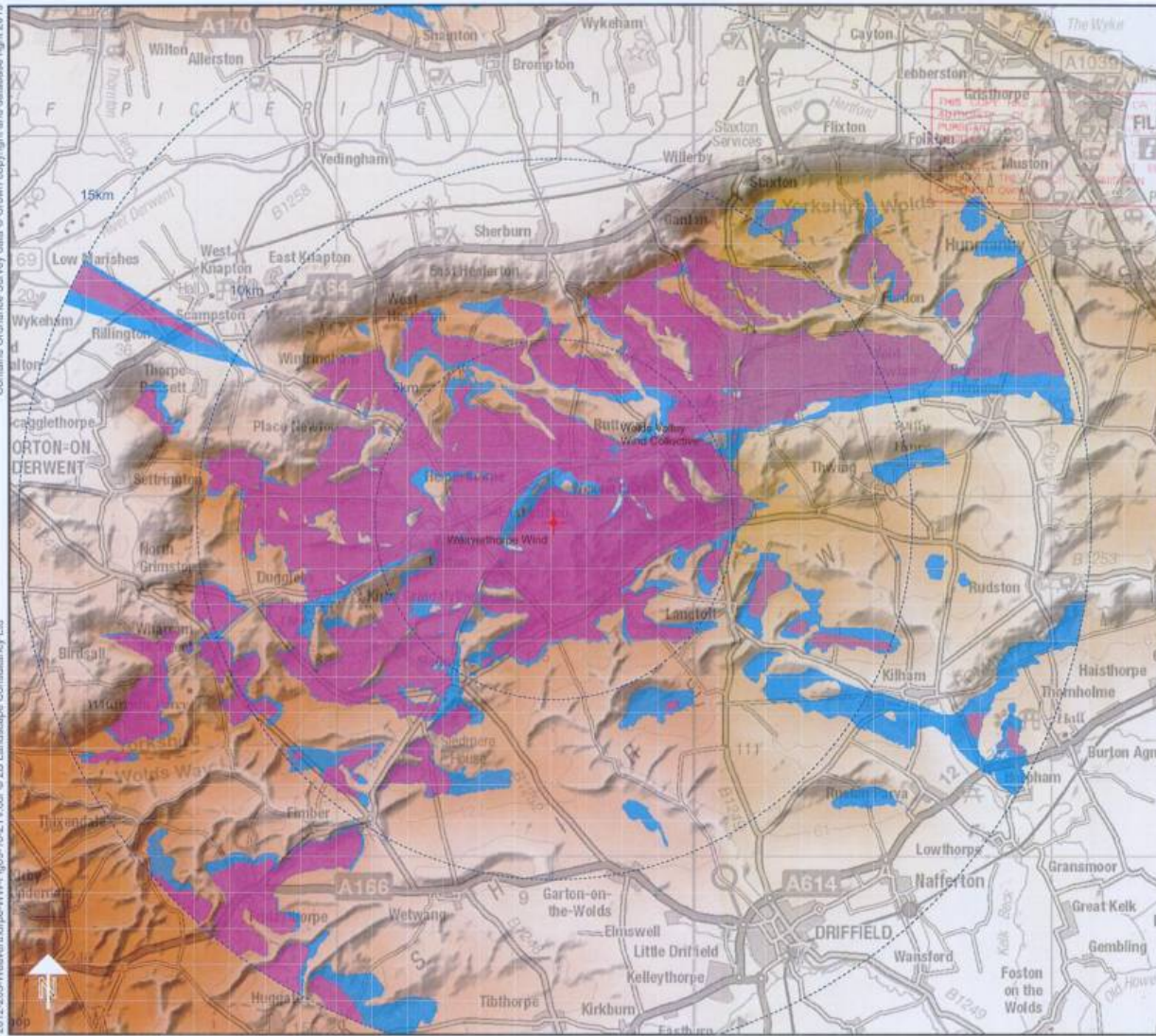
assessment - design - visualisation - realisation  
 12 Everthorpe Lane, North Cave, East Yorkshire, HU15 2LF  
 Tel: 01430 423004 http://www.2bconsultancy.co.uk

- Key:**
- Proposed turbine location (496099, 466363)
  - Nearby proposed turbine (497810, 471343)
  - Footpath
  - Bridleway
  - Restricted byways/other public access
  - Road
  - Wind turbine - built
  - Wind turbine - approved

**RYEDALE DM**  
 30 JUL 2013  
 0km 1km

Revision: -  
 Scale @ A3L:  
 1:25,000, see also barscale and 1km grid  
 Drawn: ACM Checked: EAB  
 Date:  
 July 2013  
 Filename:  
 2012-203-Weaverthorpe-WW-Fig08-Context.pdf  
 Project:  
 Proposed turbine, Weaverthorpe  
 Client:  
 Weaverthorpe Wind  
 Drawing title:  
 Local Context  
 Figure:  
 08





**2B Landscape Consultancy Ltd**  
 assessment - design - visualisation - realisation  
 12 Everthorpe Lane, North Cove, East Yorkshire, HU15 2LF  
 Tel: 01430 423094    Fax: 01430 423095    Email: info@2blandscape.co.uk  
 Web: www.2blandscape.co.uk

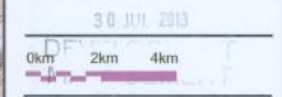
- Key:**
- + Proposed turbine location (496099, 469363)
  - + Nearby proposed turbine (497810, 471343)
  - ZTV for hub and tip
  - ZTV for tip only
  - 5km Range rings at 5km intervals

**Notes:**

ZTVs generated from hub height 40m, tip height of 67m. Receptor eye height 1.8m.

The Bare Earth ZTV is calculated against a bare-earth terrain model (OS landform panorama) with no obstructions and therefore shows theoretical visibility of a situation without trees or buildings.

See Fig 10 for ZTV with obstructions, which is a more accurate estimation of visibility.



Revision: -

Scale @ A3L:  
1:100,000, see also barscale and 1km grid

Drawn: ACM    Checked: EAB

Date:  
July 2013

Filename:  
2012-2013-Weaverthorpe-WW-Fig09-ZTV-BE.pdf

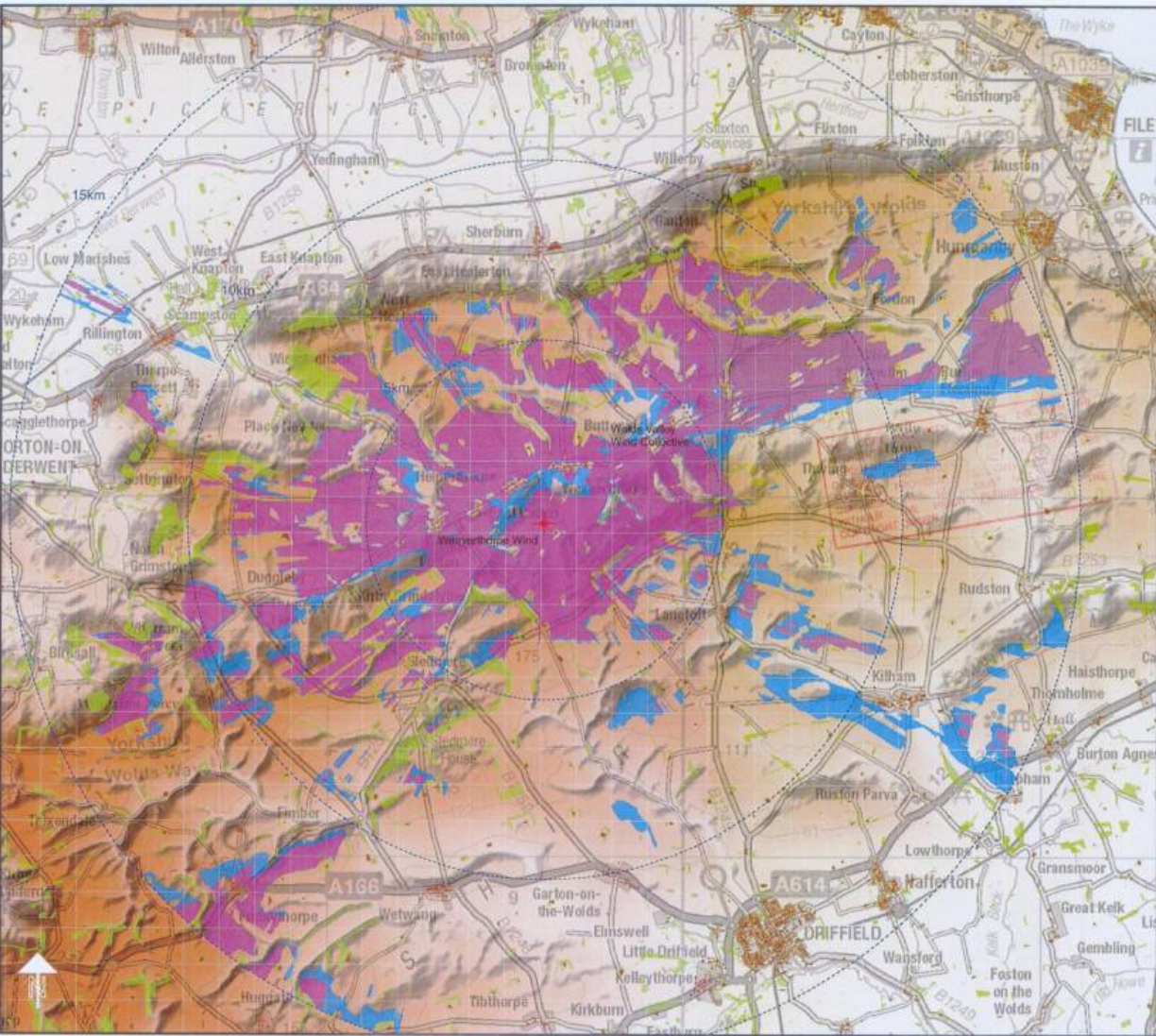
Project:  
Proposed turbine, Weaverthorpe

Client:  
Weaverthorpe Wind

Drawing title:  
Zone of Theoretical Visibility  
'Bare Earth'

Figure:  
09





**2B Landscape Consultancy Ltd**  
 assessment - design - visualisation - realisation

12 Ewerthorpe Lane, North Cave, East Yorkshire, HU11 2LF  
 Tel: 01430 423054 <http://www.2bconsultancy.co.uk>

- Key:**
- + Proposed turbine location (496099, 469363)
  - + Nearby proposed turbine (497810, 471343)
  - ZTV for hub and tip
  - ZTV for tip only
  - Woodland areas
  - 5km Range rings at 5km intervals

**Notes:**

ZTVs generated from hub height 40m, tip height of 67m, Receiver eye height 1.8m.

The ZTV 'with obstructions' is calculated with addition of obstructions in the form of woodlands (OS data, assigned 12m height) and buildings (OS data, assigned 8m height). This presents a more realistic impression of the actual visibility, although it does not demonstrate additional screening effects of localised banks, hedgerows, individual trees and any taller buildings and tree groups.

See Fig.09 for ZTV without obstructions.

30 JUL 2013

Revision: -

Scale @ A3L:  
 1:100,000, see also barscale and 1km grid

Drawn: ACM      Checked: EAB

Date:  
 July 2013

Filename:  
 2012-2013-Weaverthorpe-WW-Fig10-ZTV-WO.pdf

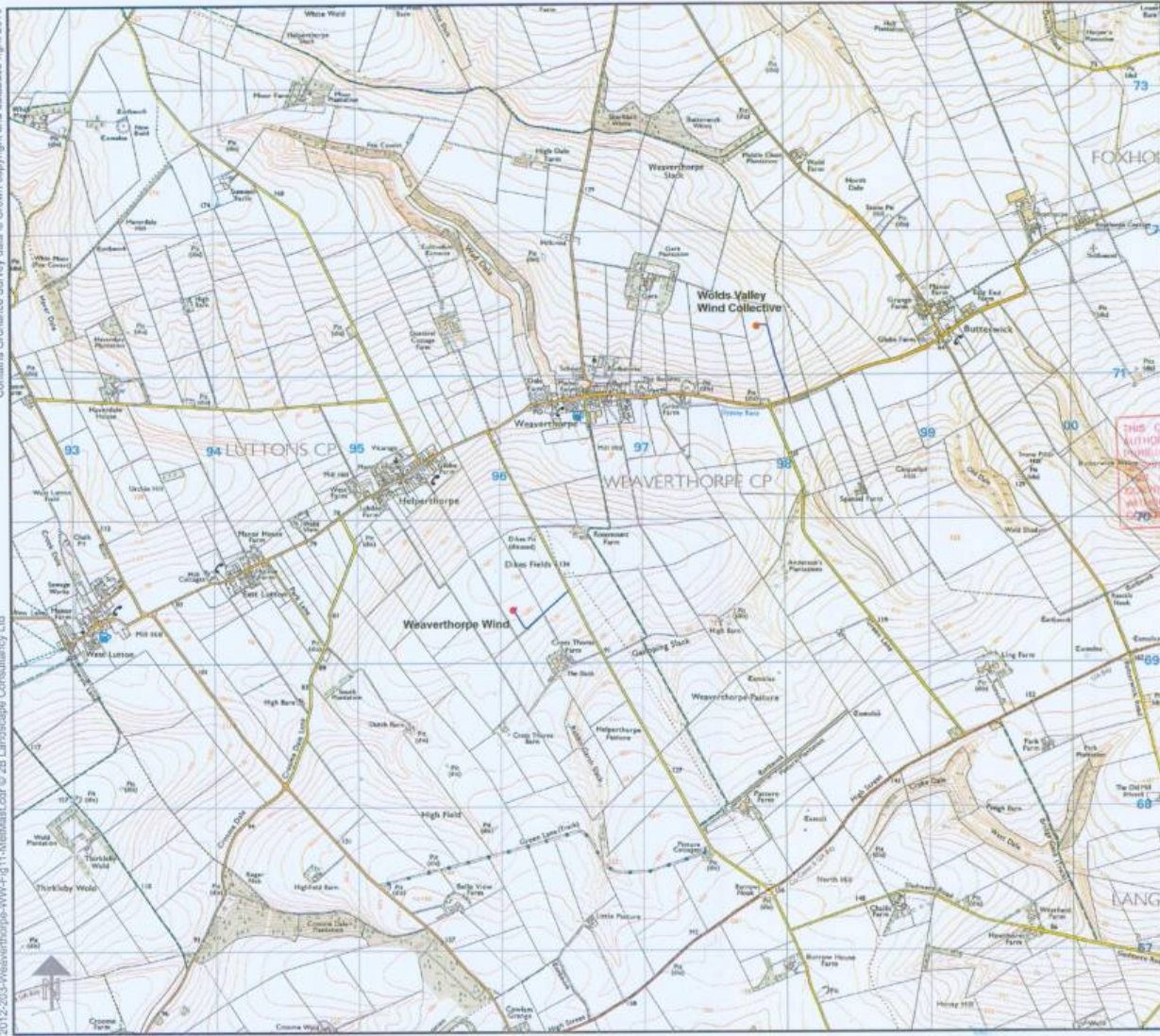
Project:  
 Proposed turbine, Weaverthorpe

Client:  
 Weaverthorpe Wind

Drawing title:  
 Zone of Theoretical Visibility  
 'With Obstructions'

Figure:  
 10





assessment - design - visualisation - realisation

12 Everthorpe Lane, North Cave, East Yorkshire, HU15 2LF  
Tel: 01430 423004 <http://www.2bconsultancy.co.uk>

**Key:**

- Proposed meteorological mast locations
- Weaverthorpe Wind (496099, 469363)
- Wolds Valley Wind Collective (497810, 471343)
- Access track

THIS COPY HAS BEEN MADE OF OR WITH THE AUTHORITY OF THE LOCAL COUNCIL (HEREIN) TO BE USED FOR THE PURPOSES OF THE APPLICATION ONLY. ANY REPRODUCTION OR ALTERATION OF THIS COPY WITHOUT THE WRITTEN PERMISSION OF THE COPYRIGHT OWNER.

0km 1km



Revision: -

Scale @ A3L:  
1:25,000, see also barscale and 1km grid

Drawn: ACM Checked: EAB

Date:  
July 2013

Filename:  
2012-203-Weaverthorpe-WW-Fig 11-MetMast.pdf

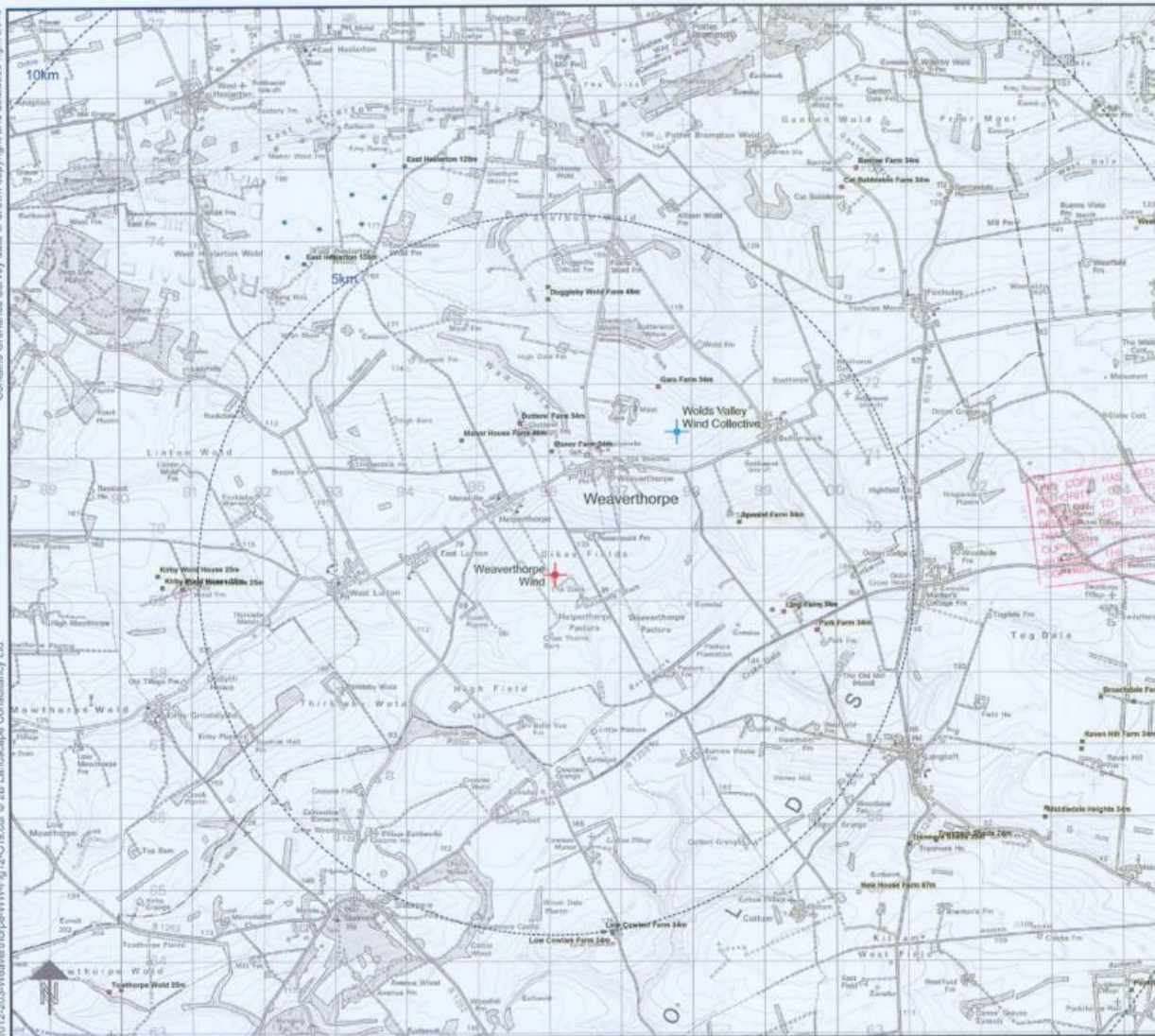
Project:  
Proposed turbine, Weaverthorpe

Client:  
Weaverthorpe Wind

Drawing title:  
Meteorological Mast Locations

Figure:  
11





**2B Landscape Consultancy Ltd**

assessment - design - visualisation - realisation

12 Everthorpe Lane, North Cave, East Yorkshire, HU15 2LF  
Tel: 01430 423054 http://www.2bconsultancy.co.uk

**Key:**

- Proposed turbine location (496009, 469363)
- WVCW proposed turbine (497810, 471343)
- Other Turbines**
- built
- approved
- application
- scoping
- refused
- withdrawn

5km Range Rings at 5km intervals

0km 2km

Revision: -

Scale @ A3L:  
1:50,000, see also barscale and 1km grid

Drawn: ACM Checked: EAB

Date:  
July 2013

Filename:  
2012-203-Weaverthorpe-WW-Fig12-OTs.pdf

Project:  
Proposed turbine, Weaverthorpe

Client:  
Weaverthorpe Wind

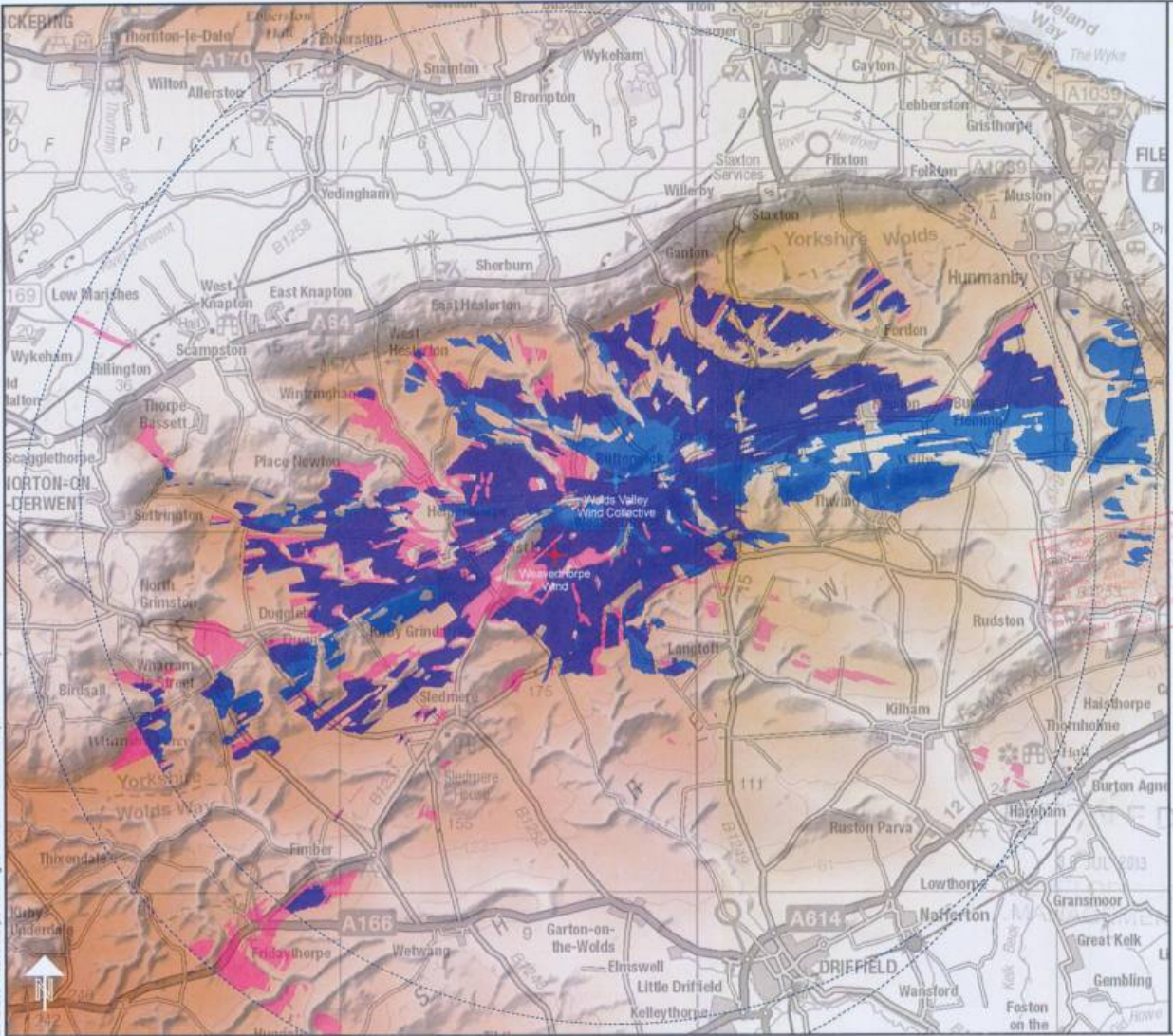
Drawing title:  
Other turbine development

Figure:  
12

RYR/12/LE DM  
30 JUL 2013  
DEVELOPMENT  
MANAGEMENT

THIS COPY HAS BEEN MADE BY OR WITH THE PERMISSION OF THE COUNTY COUNCIL. IT IS NOT TO BE USED FOR ANY OTHER PURPOSES WITHOUT THE WRITTEN PERMISSION OF THE COUNTY COUNCIL.





**2B Landscape Consultancy Ltd**  
 assessment - design - visualisation - realisation

12 Ewerthorpe Lane, North Cave, East Yorkshire, HU15 3LF  
 Tel: 01430 423204 http://www.2bconsultancy.co.uk

**Key:**

- Weaverthorpe Wind (WW) (497810, 471343)
- Wolds Valley Wind Collective (WVWC) (496099, 469363)
- ZTV for both turbines
- ZTV for WVWC only
- ZTV for WW only
- Range rings at 15km from each turbine

**Notes:**

ZTVs generated from hub height of 40m. Receptor eye height 1.8m.

The ZTVs are generated 'With Obstructions' in order to present a more realistic impression of combined visibility across the study area. Compare with the 'Bare Earth' and 'With Obstructions' ZTVs including both Taps and Hubs of turbines at Figures 9 and 10.

0km 2km 4km

Revision: -

Scale @ A3L: 1:100,000, see also barscale

Drawn: BB Checked: EAB

Date: July 2013

Filename: 2012-2013-Weaverthorpe-WW-Fig33-ZTVs.pdf

Project: Proposed turbine, Weaverthorpe

Client: Weaverthorpe Wind

Drawing title: Zones of Theoretical Visibility for WW & WVWC turbines

Figure: 33